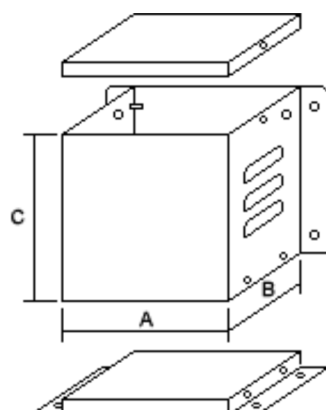




Standard Transformer Enclosures

'P' Range Transformer Enclosures (IP22 Rated)



Reference	Internal Dimensions (mm)		
	Width (A)	Depth (B)	Height (C)
P0	130	115	127
P1	130	115	190
P2	154	154	220
P3	193	177	242
P4	258	215	268
P5	282	242	350
P6	305	305	450
P7	365	335	475

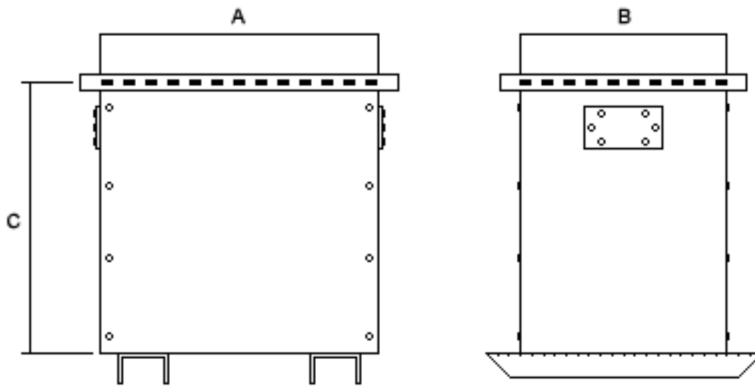
Notes:

- It is not advised to lift the case by the way of eye bolts in the lid.**
- Lifting points are provided in the skid base or alternatively forks can be used through the skids.
- Installation and adjustment should be carried out by qualified personnel; no responsibility can be accepted for misuse or for consequential damage.

Owing to continuous development, design may be altered without notice, size and weights are approximate. Douglas cannot be held liable for any errors which may contained in this catalogue or list. Please verify physical and electrical properties before tooling up.

Standard Transformer Enclosures

'T' Range Transformer Enclosures (IP20 Rated)



Reference	Internal Dimensions (mm)		
	Width (A)	Depth (B)	Height (C)
T1	300	150	300
T2	400	200	400
T3	500	350	500
T4	600	400	600
T5	740	485	760
T6	800	600	700
T7	1000	700	800
T8	1100	800	900
T9	1250	800	1250
T10	700	500	600
T11	800	400	800
T12	900	600	800
T13	1200	700	1100

Notes:

- It is not advised to lift the case by the way of eye bolts in the lid.**
- Lifting points are provided in the skid base or alternatively forks can be used through the skids.
- Installation and adjustment should be carried out by qualified personnel; no responsibility can be accepted for misuse or for consequential damage.

Owing to continuous development, design may be altered without notice, size and weights are approximate. Douglas cannot be held liable for any errors which may be contained in this catalogue or list. Please verify physical and electrical properties before tooling up.